

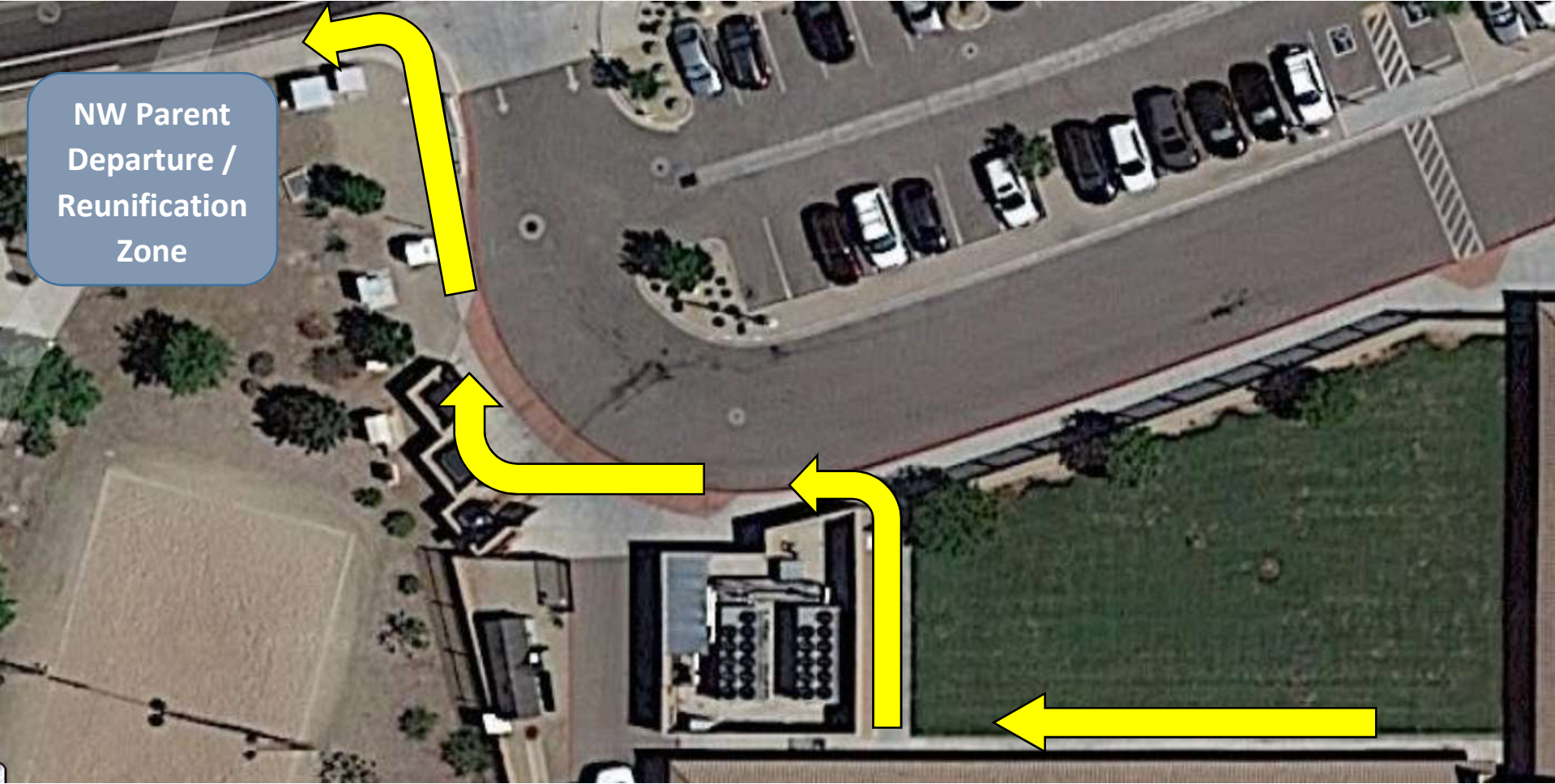
# WALKERS EXIT MAP / PARENT MEETING LOCATIONS



*\*Kinder/1<sup>st</sup> Grade Students can be met by one parent at their respective gate if they do not have a sibling to walk with.*

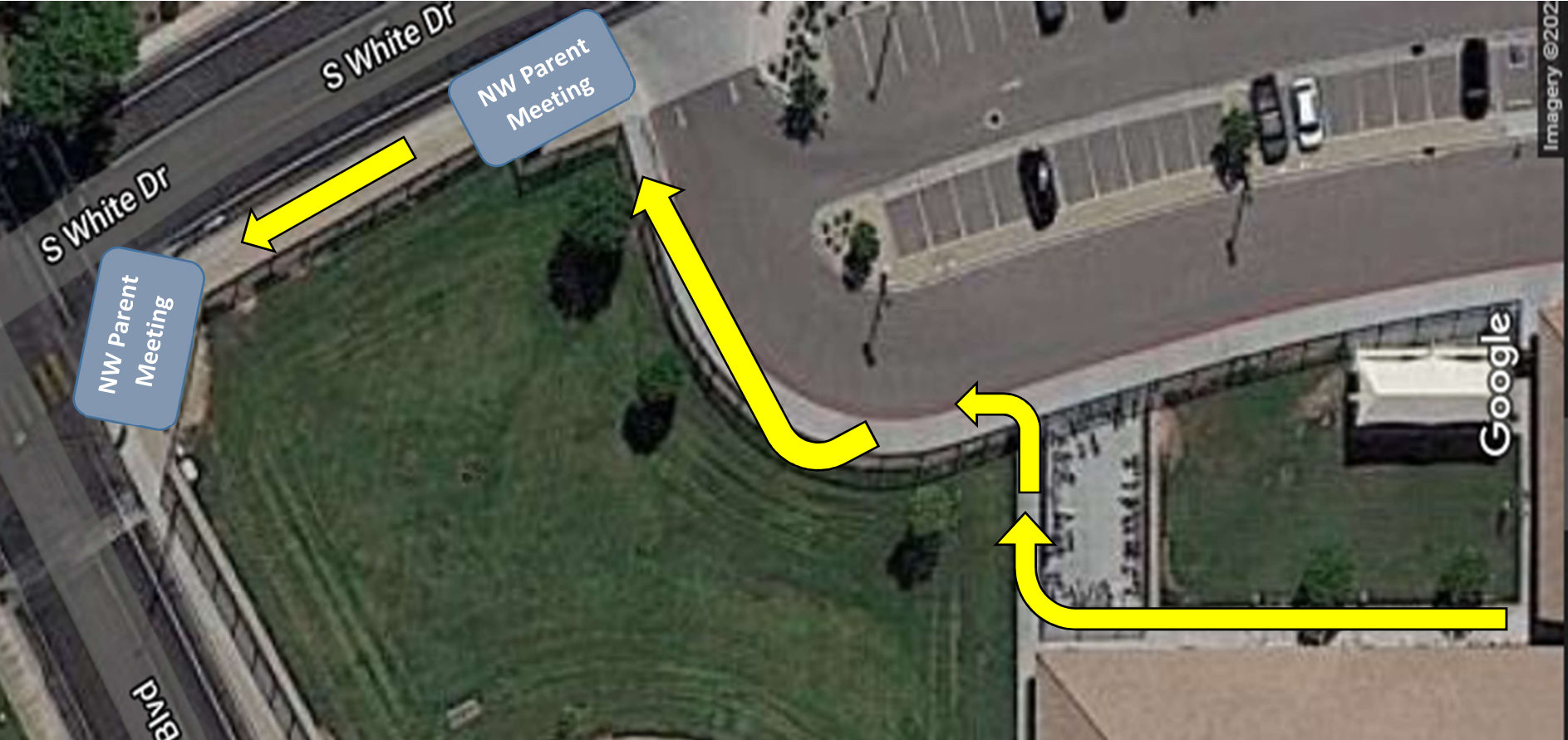
# WALKERS EXIT MAP / PARENT MEETING LOCATIONS

## Northwest Walkers



**WALKERS EXIT MAP / PARENT MEETING LOCATIONS**

**Northeast Walkers**



# WALKERS EXIT MAP / PARENT MEETING LOCATIONS

## South Walkers

